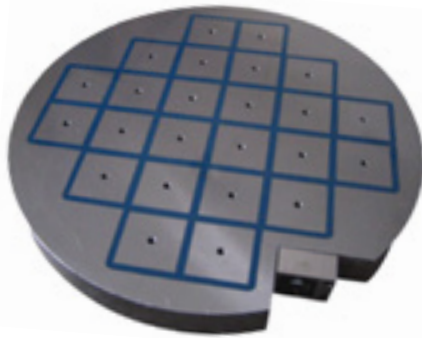


## EPQ series

### Product Pictures



### Application

- For lathe
- Best suited for workpieces at least 400x400mm and 18mm thick, also with normal operating air gaps

### Features

- Pole size : 50 ×50/75 ×75mm
- 400/750 kgf for each pole
- High poles density
- Magnetic field depth : 18mm

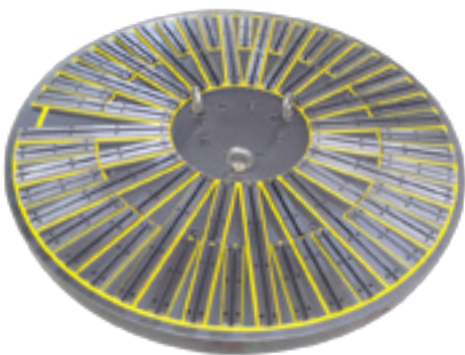
### SPECIFICATIONS

MODEL	DIMENSION(MM)									
	A	B	C	D	E	F	G	H	I	WEIGHT(KG)
EPQ500	500	68	280	4	320	M16(6X)	16	100	15	160
EPQ600	600	68	350	4	390	M16(6X)	18	100	15	230
EPQ800	800	68	500	4	560	M16(6X)	18	180	18	430
EPQ900	900	68	500	4	560	M16(6X)	18	180	18	560
EPQ1000	1000	68	500	4	620	M16(8X)	18	200	18	720

Other size on request

## EPR series

### Product Pictures



### Application

- For lathe

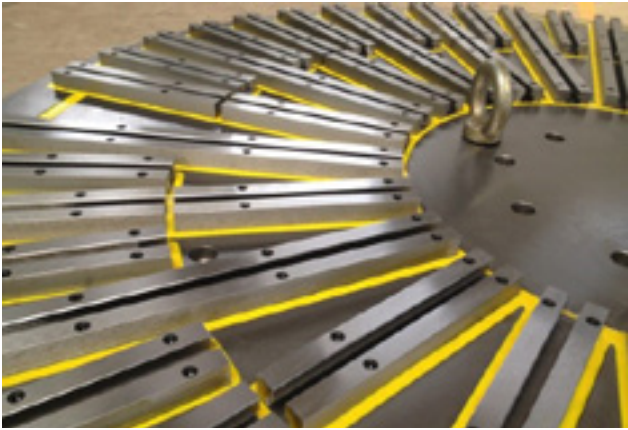
### Features

- Max diameter can up to 3800mm
- T-slots could be available according to the request of customers
- Sealed to IP 65
- 3-sided machining is possible in one clamp

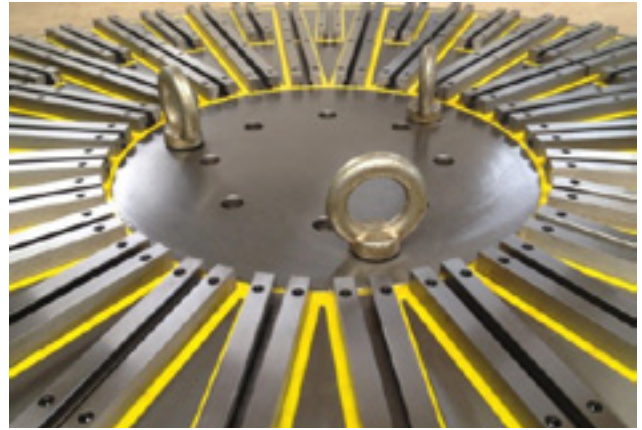
### SPECIFICATIONS

MODEL	DIMENSION(MM)									
	A	B	C	D	E	F	G	H	I	WEIGHT(KG)
EPR500	500	68	280	4	320	M16(6X)	16	100	15	160
EPR600	600	68	350	4	390	M16(6X)	18	100	15	230
EPR800	800	68	500	4	560	M16(6X)	18	180	18	430
EPR900	900	68	500	4	560	M16(6X)	18	180	18	560
EPR1000	1000	68	500	4	620	M16(8X)	18	200	18	720

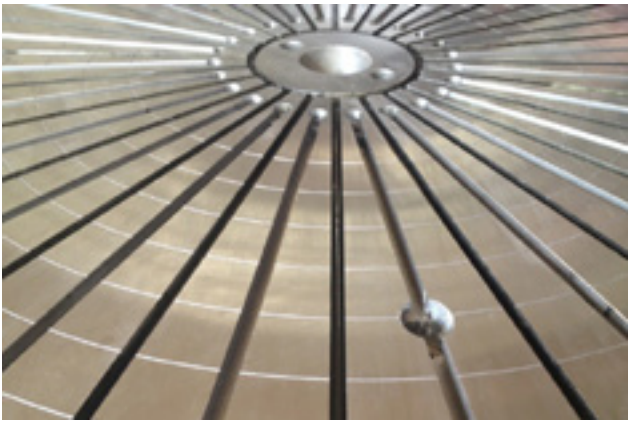
Other size on request



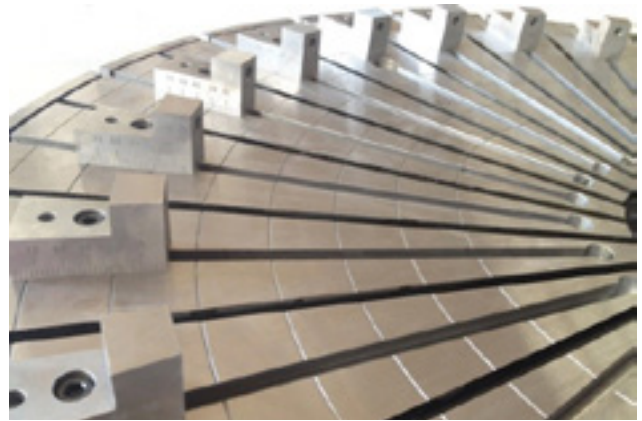
T-slots according to customer's request



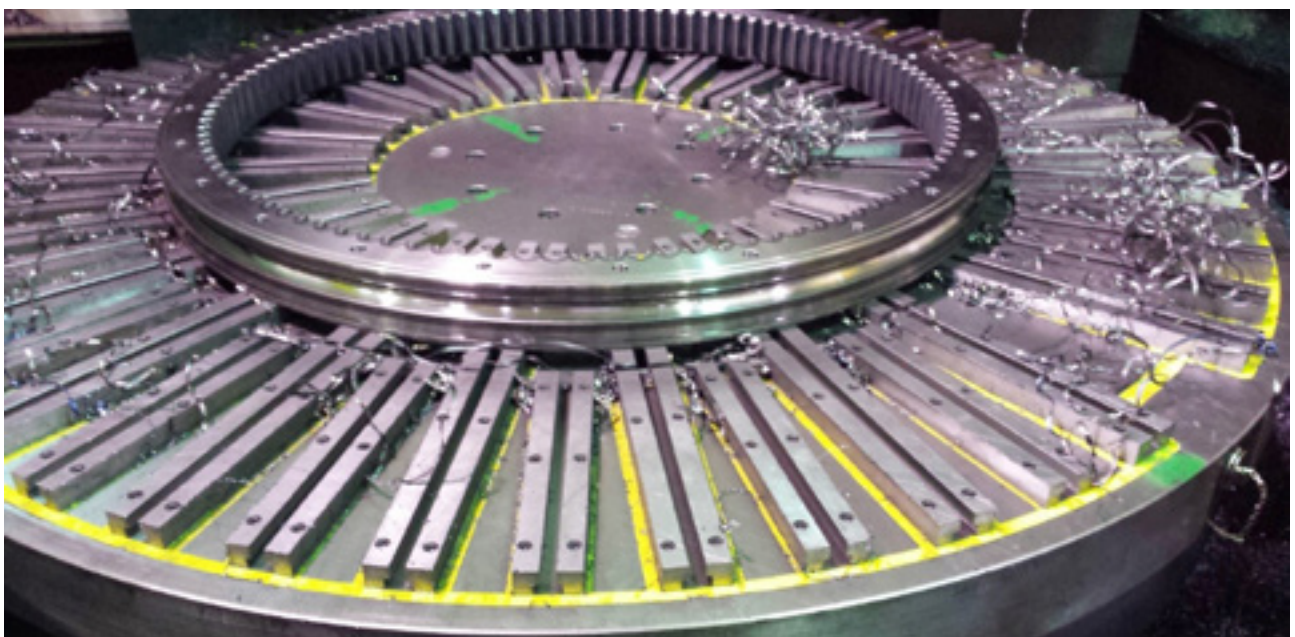
Hanging holes for the installation of the chuck



EPR chuck with full-steel structure



Pole extensions with dividing ruler



EPR chuck applied on the lathe machine.