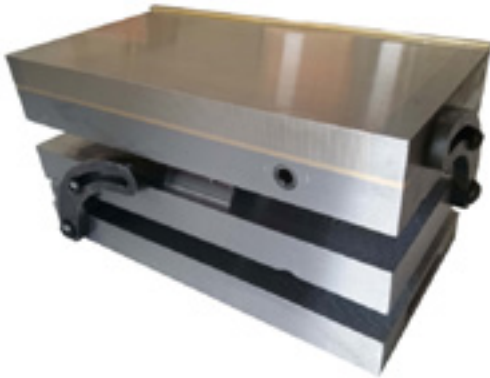


# MCC series

## Product Pictures



## Description

- Double sine permanent magnetic chuck
- Positive locking at all angles without any distortion

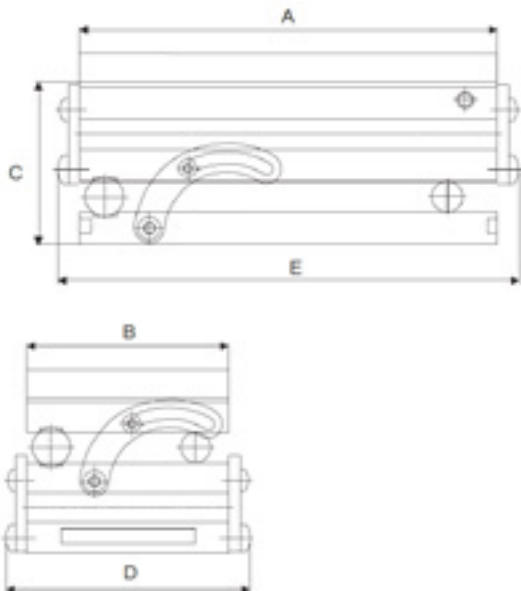
## Application

- Ideal for high accuracy grinding operations
- Suitable for grinding EDM of angle process
- Wide range of workpieces can be used by tilting in length, breadth or compound angle

## Features

- Holding force: 80 N/cm<sup>2</sup>
- Grind in two angles at the same time
- High adjustment accuracy, no flatness change when switch On/Off
- Pole pitch: 0.5+1.5mm
- Made by hardened alloy tool steel
- Strong suction, small remanent magnetization, uniform magnetic force distribution
- Large effective machining area
- Angle precision 0.007/100mm, low height for more wheel clearance

## The Brief Drawing



## SPECIFICATIONS

MODEL	DIMENSIONS (MM)					WEIGHT (KG)	POLE PITCH (MM)	OPERATING ANGLE
	A	B	C	D	E			
MCC1025	250	104	150	140	285	22.5	0.5+1.5	0°-50°
MCC1225	250	120	150	155	285	26	0.5+1.5	0°-50°
MCC1530	300	150	150	185	335	39	0.5+1.5	0°-50°
MCC1535	350	150	150	185	385	45	0.5+1.5	0°-50°
MCC1545	450	150	160	185	485	59	0.5+1.5	0°-50°
MCC2040	400	200	160	235	435	69	0.5+1.5	0°-50°
MCC2050	500	200	160	235	450	86	0.5+1.5	0°-50°

Other size on request