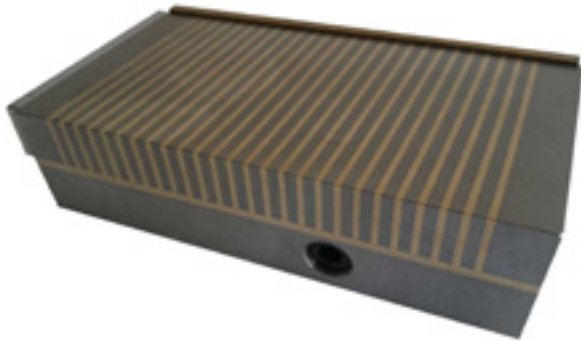


# PMS series

## Product Pictures



## Description

- Standard pole permanent magnetic chuck

## Application

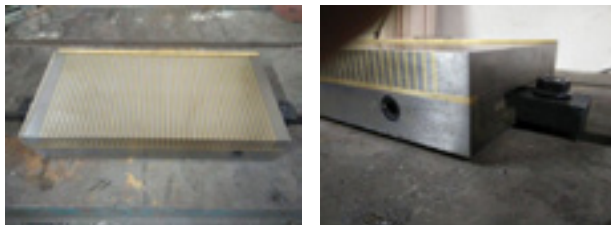
- For grinding and light cutting application
- Best for large and thick size workpiece

## Attachments



## Features

- Strong magnetic force and less remaining magnetism
- With coolant and water proof structure
- Can be switched ON or OFF by hand lever
- With parallelism, flatness and squareness 0.005mm/100mm
- Nominal holding force: 100 N/cm<sup>2</sup>
- Magnetic field depth: 8mm
- Pole plate wearing limit: 5mm
- Pole pitch: steel 4mm, brass 2mm



- Installation of permanent magnetic chuck with side clamping slots

## SPECIFICATIONS

MODEL	DIMENSIONS(MM)			WEIGHT (KG)	POLE PITCH (MM)
	LENGTH	WIDTH	HEIGHT		
PMS1018	104	180	49	6.5	2+4
PMS1325	130	250	49	11.5	2+4
PMS1530	150	300	51	15.5	2+4
PMS2040	200	400	51	32	2+4
PMS2060	200	600	51	52	2+4
PMS3050	300	500	56	60	2+4
PMS3060	300	600	56	72	2+4

Other size on request