

# RMR series

## Product Pictures



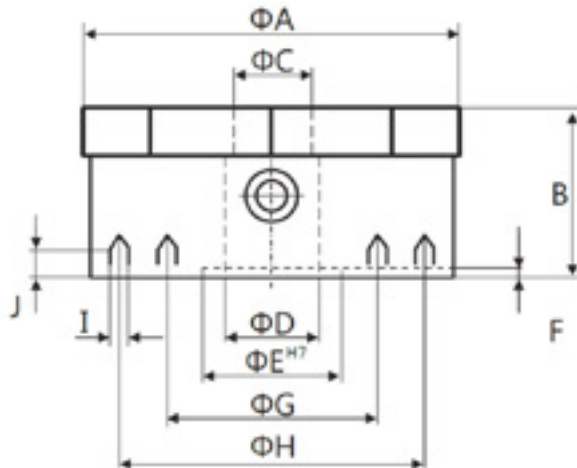
## Description

- Radial pole round permanent magnetic chuck

## Application

- For grinding and cutting process of round machine
- Best for cylindrical and ring-shaped workpieces

## The Brief Drawing



## Features

- With coolant and water proof structure
- Can be switched ON or OFF by hand lever
- Nominal holding force: 80~150N/cm<sup>2</sup>
- Magnetic field depth: 8mm
- Pole plate wearing limit: 5mm(A=150~300mm), 8mm(A=350~400mm)



## SPECIFICATIONS

MODEL	DIMENSIONS (MM)										WEIGHT (KG)	NUMBER OF POLES(PCS)
	A	B	C	D	E	F	G	H	I	J		
RMR100	100	56	14			5	76		3xM8	15	3.5	6
RMR160	160	56	20	24	50	5	80	120	4xM8	15	9	10
RMR200	200	56	28	30	50	5	110	180	4xM8	15	14	12
RMR250	250	56	30	50	60	5	140	220	4xM10	18	22	16
RMR300	300	56	40	58	80	5	180	260	4xM12	18	31	16
RMR350	350	56	40	58	150	5	220	300	4xM12	18	43	20
RMR400	400	61	40	58	170	5	260	340	4xM12	18	60	20

Other size on request